



SHAWNA MOORE
WAYFARER | 2019

SHAWNA MOORE
WAYFARER | 2019

2019 Copyright by the author of this book, Shawna Moore.
The book author retains sole copyright to her contributions in this book.

www.ShawnaMoore.com

Edited by Highline Design Co. - www.highline-design.com

Photography by Morgan Delaney

Outside & inside cover photos by Claire Wiley of Eclectic Brew





Sea Breeze | 60"x60" | Encaustic on panel

ARTIST STATEMENT

I see in these new paintings the road map between my artistic past and my creative future. Perhaps it is only fitting to excavate deeply into a life of travel, nature and poignant visual experiences at the midpoint of my fifties and after 20 years as a professional artist.

My love of travel offers an opportunity for adventure. Exploration satisfies my need for escape and refills my vision and sense of beauty. It also helps me see someone else's point of view. It opens up many new windows and doors, both literal and figurative, to the curious mind. Even the planning of a trip conjures the imagination, much like the creative practice stirs the pot of invention.

The paintings are meant to be experiential. I take a journey with each piece I make. Sometimes I invent a place, other times a breeze of the sea sweeps over me and reminds me of a beach I have stood upon or an ocean I have surfed.

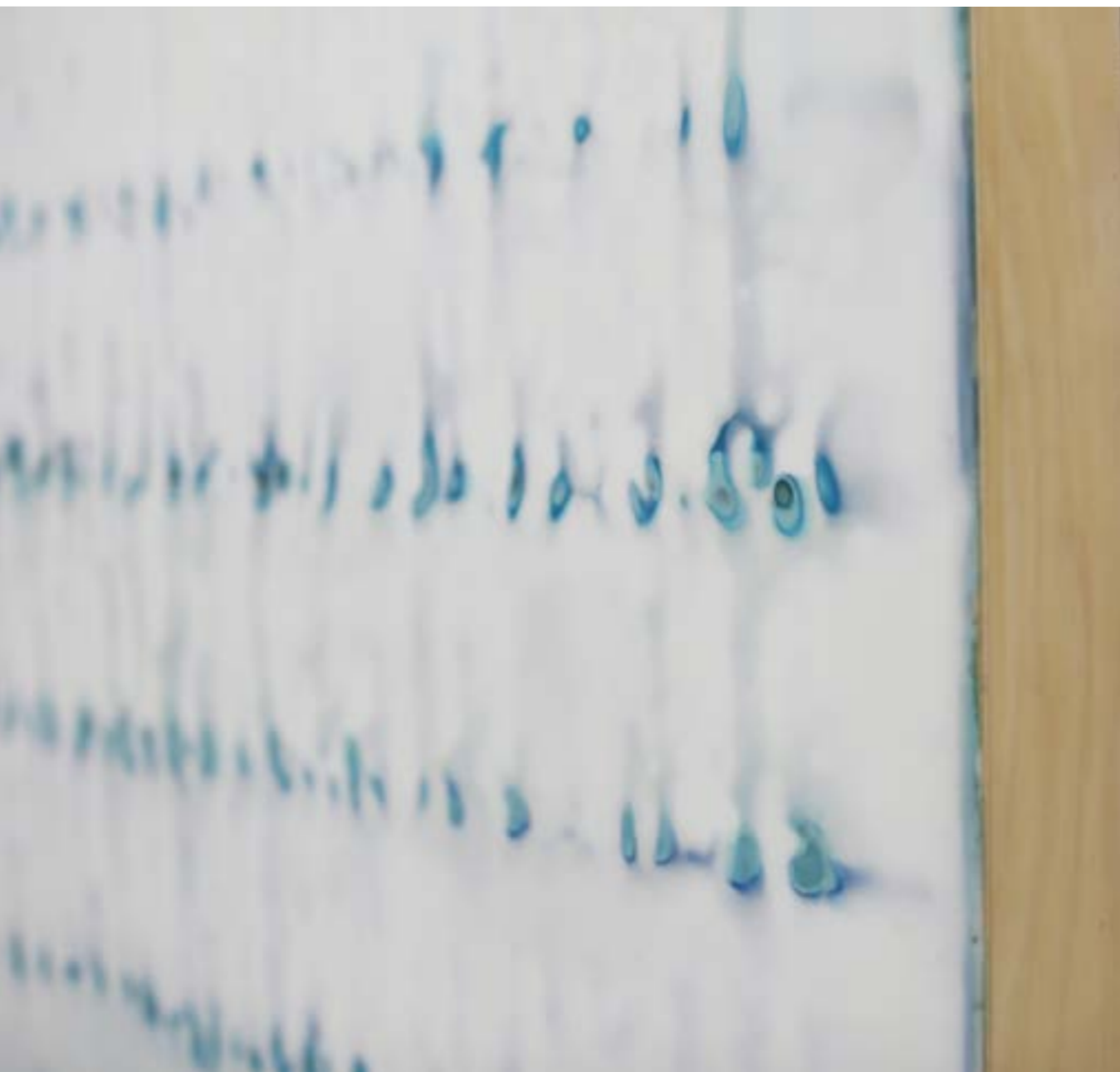
Shawna Moore

“Over the years, one comes to measure a place, too, not just for the beauty it may give, the balminess of its breezes, the insouciance and relaxation it encourages, the sublime pleasures it offers, but for what it teaches. The way in which it alters our perception of the human. It is not so much that you want to return to indifferent or difficult places, but that you want to not forget.”

Barry Lopez, About This Life



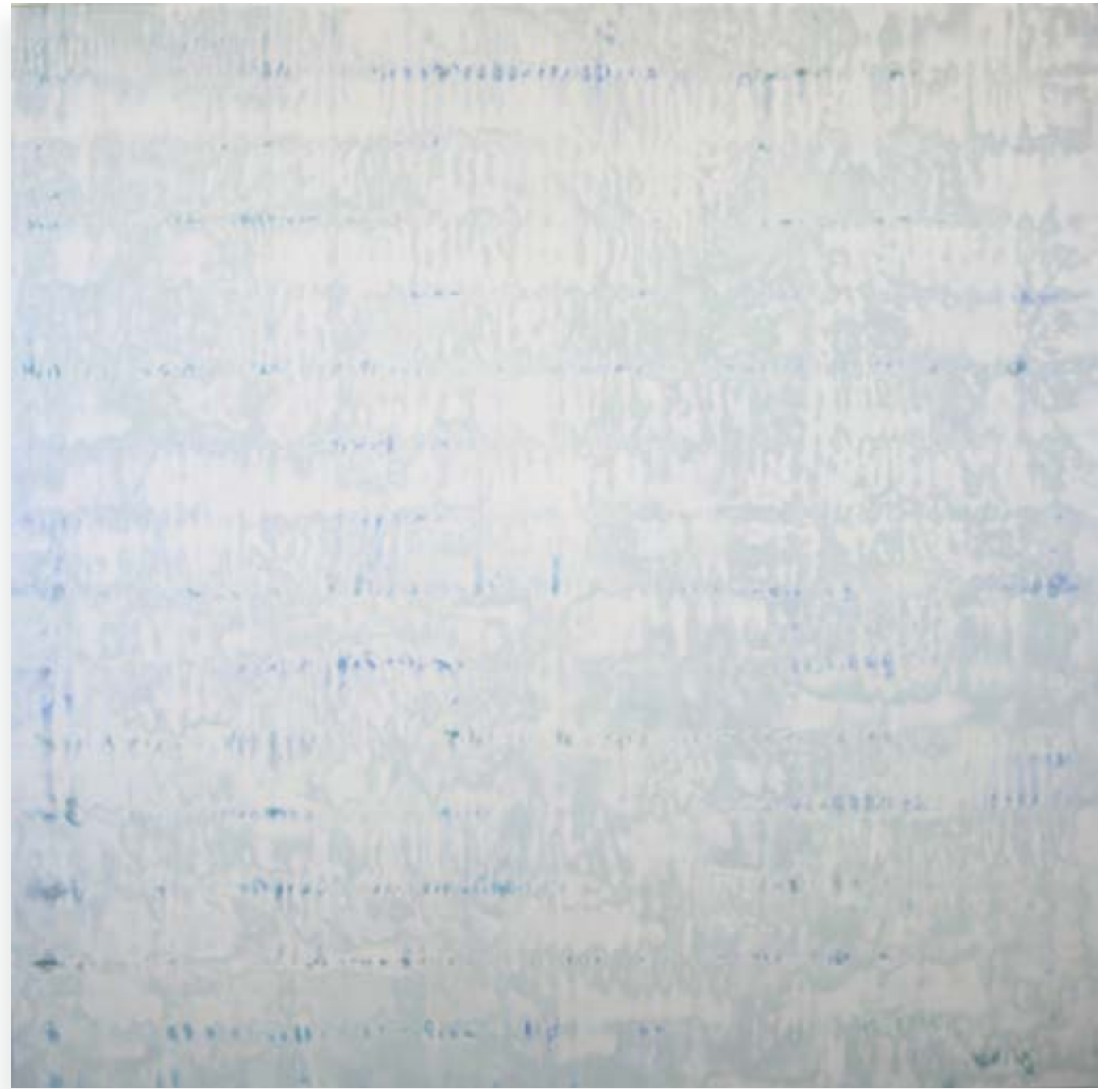
Rogue Wave | 60"x60"
Encaustic on panel



Salt Pilgrim
60"x60"
Encaustic on panel
Detail - left



Spring Snow | 60"x60"
Encaustic on panel



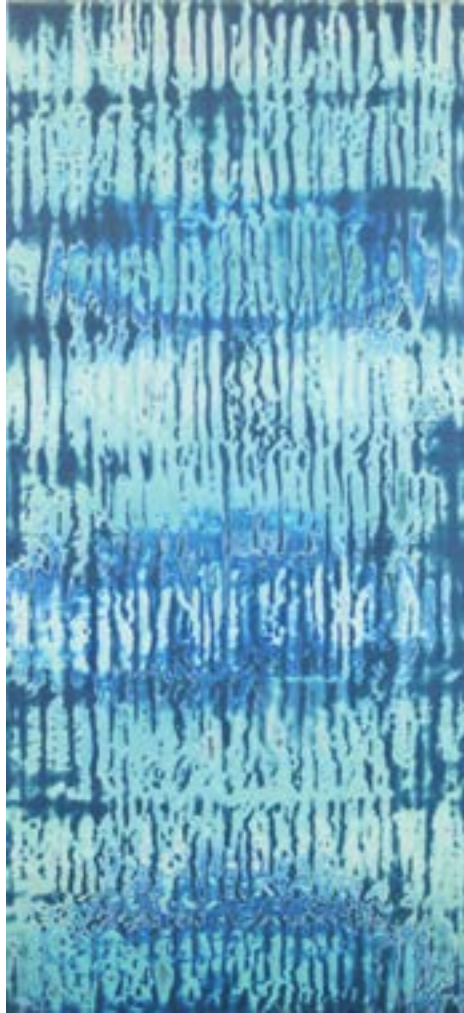
Wind Swept | 70"x30"
Encaustic on panel





Silver Reef | 45"x56"
Encaustic on panel
Detail -previous spread





River Bend | 45"x20"
Encaustic on panel



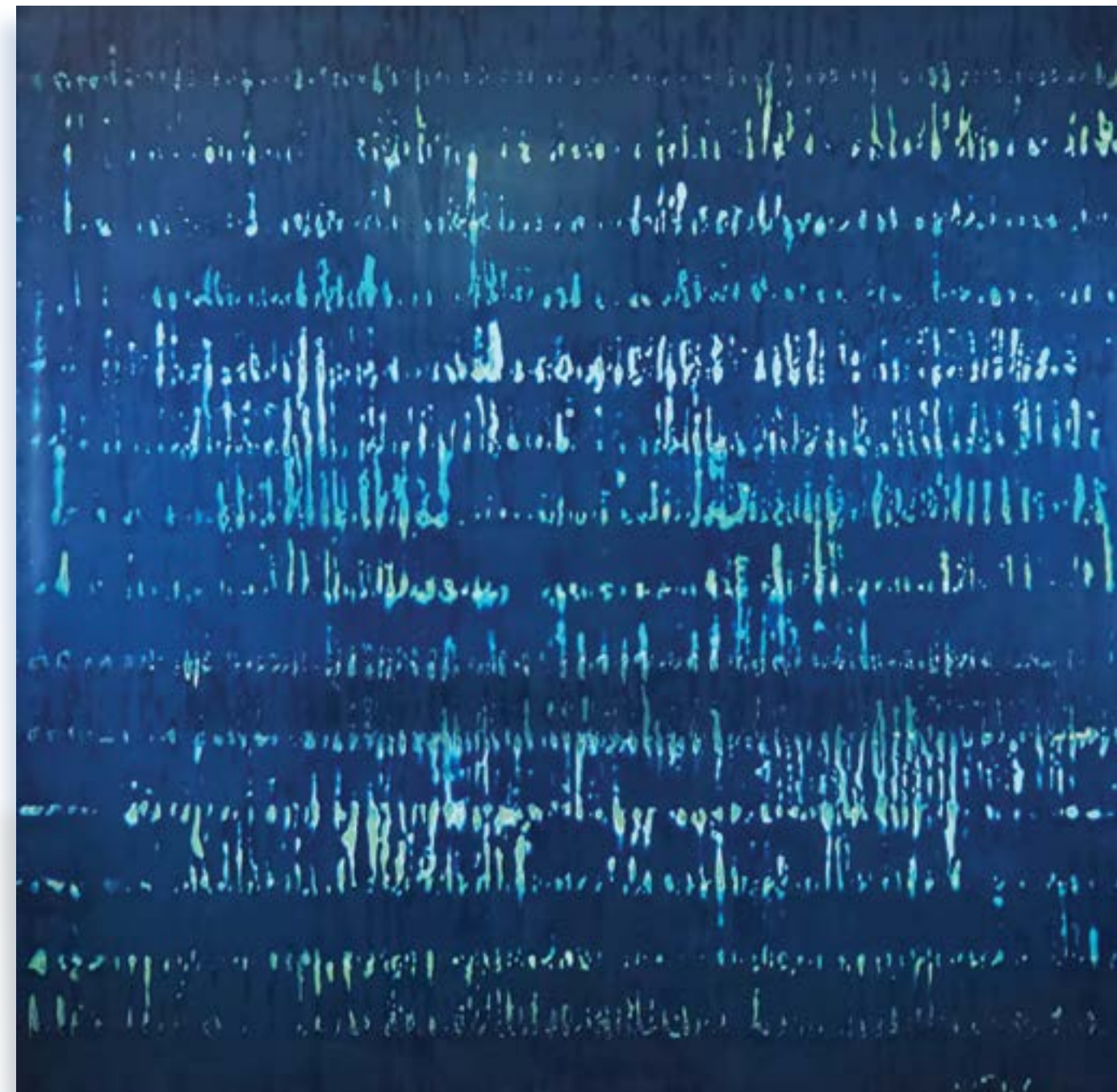
Wild Card | 45"x20"
Encaustic on panel

Sea Breeze | 60"x60"
Encaustic on panel



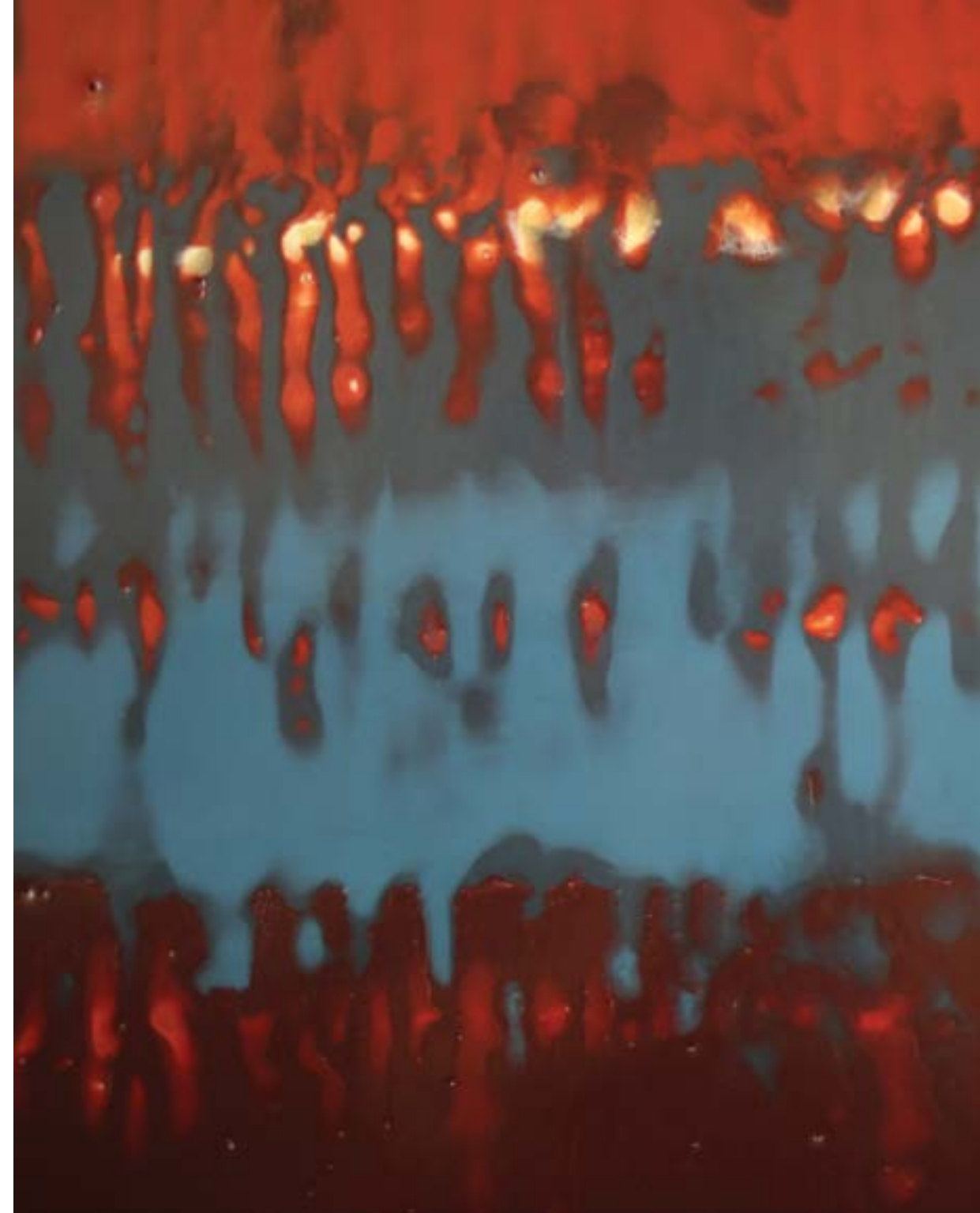


Outside Break | 60"x60"
Encaustic on panel
Detail - left





Porto | 45"x45"
Encaustic on panel
Detail - right





Blue Heaven | 45"x45"
Encaustic on panel
Detail - right





Kahana | 45"x45"
Encaustic on panel
Detail - left





Beach Break | 45"x45"
Encaustic on panel
Detail - right

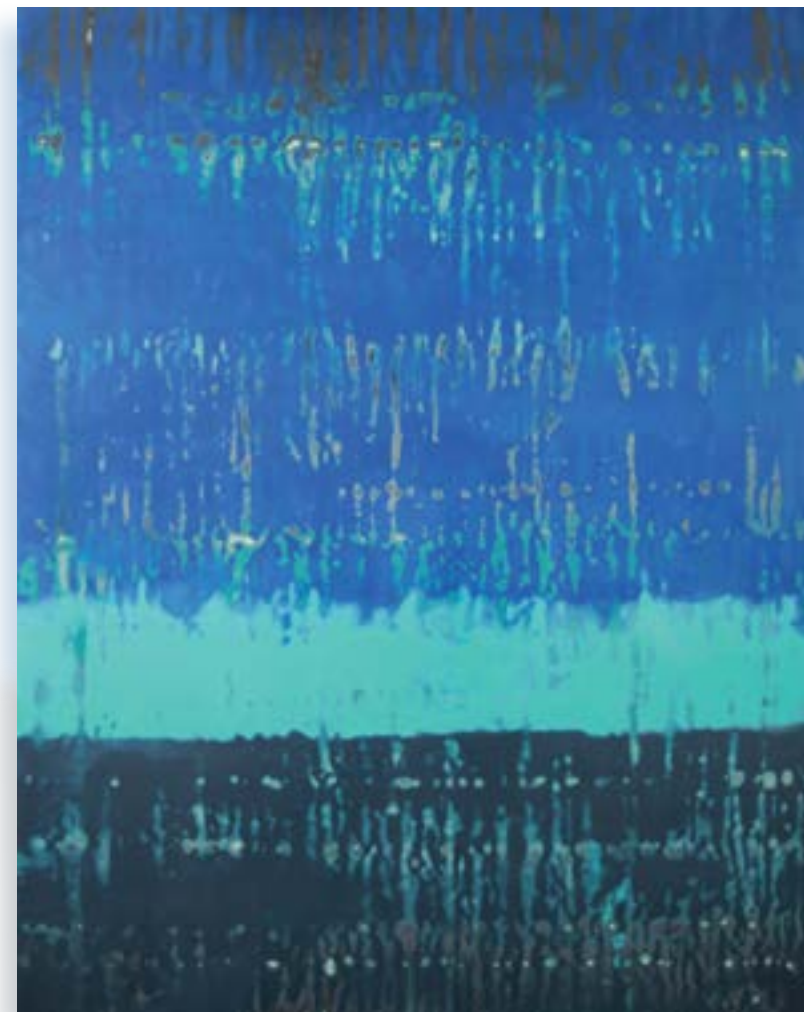




Shock Wave | 36"x45"
Encaustic on panel
Detail - left



Blue Mind | 45"x36"
Encaustic on panel



Reckoning | 45"x36"
Encaustic on panel



Espirit | 40"x40"
Encaustic on panel



Open Water | 40"x40"
Encaustic on panel



Sand and Sea | 42"x42"
Encaustic on panel



Line Up | 40"x40"
Encaustic on panel
Detail - right





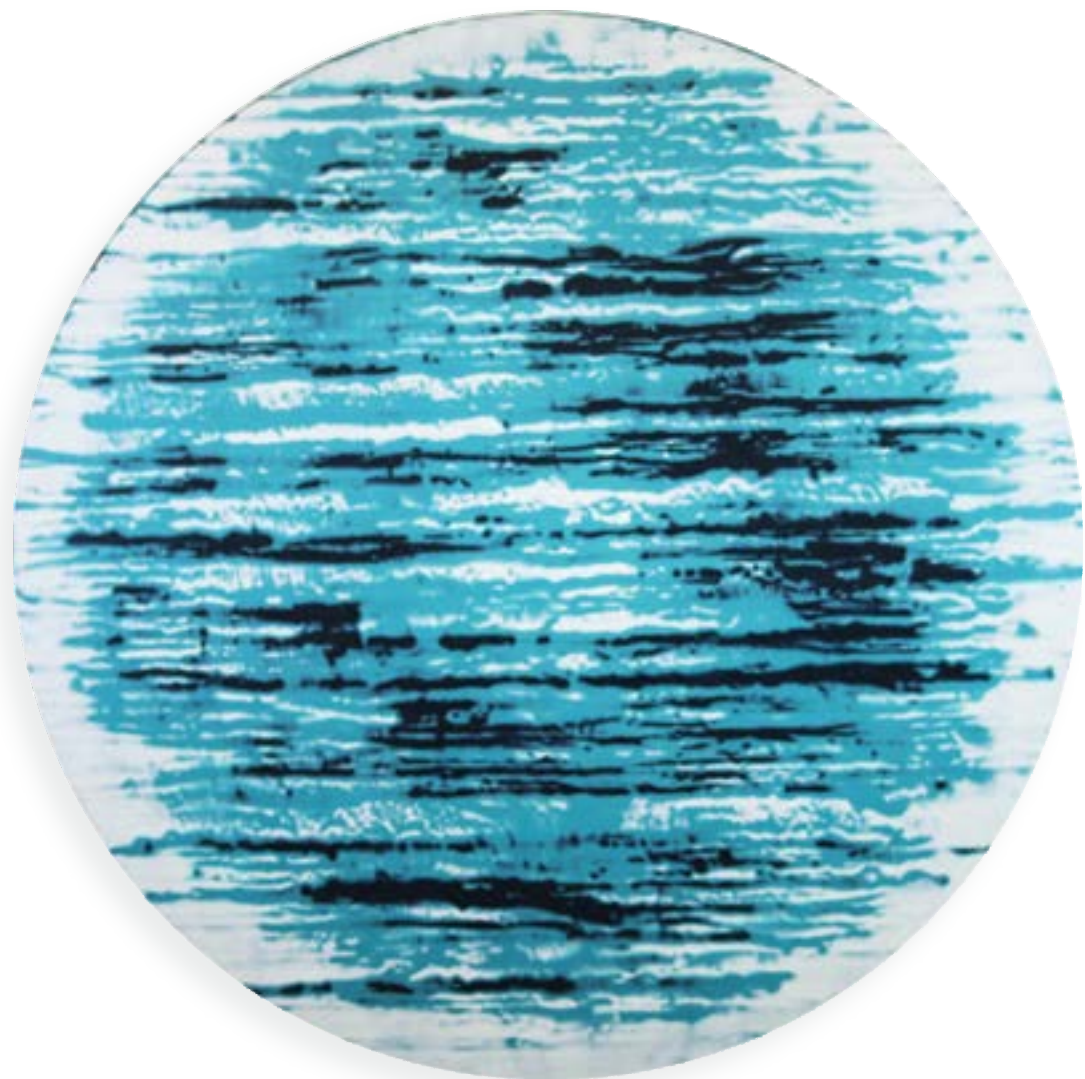
New Dawn | 60"x40"
Encaustic on panel



Missing Piece | 60"x40"
Encaustic on panel

Close Out | 60"x40"
Encaustic on panel





Sea Change | 48" Round | Encaustic on panel



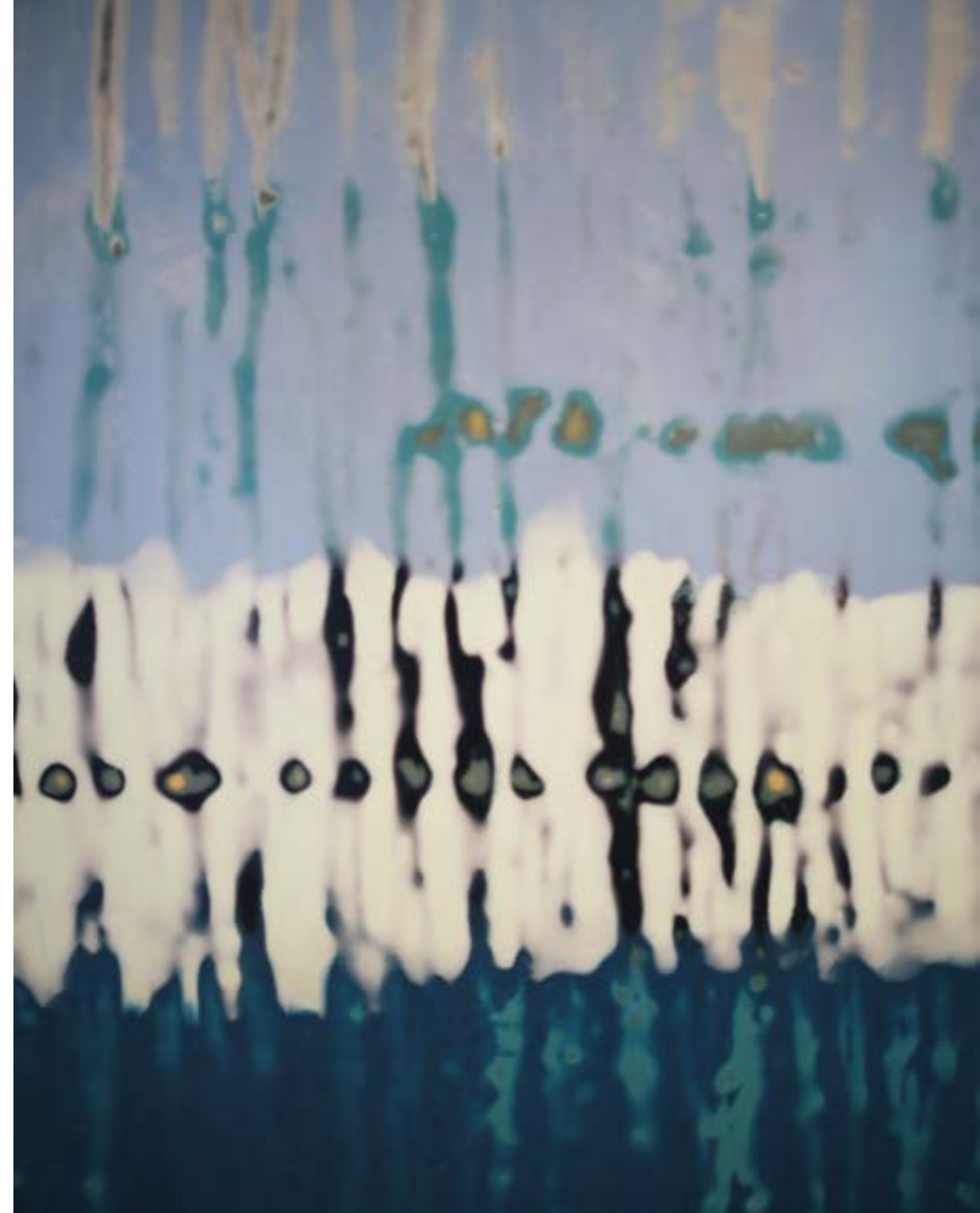
Off Shore | 48" Round | Encaustic on panel



Cloud Break | 45"x60" | Encaustic on panel

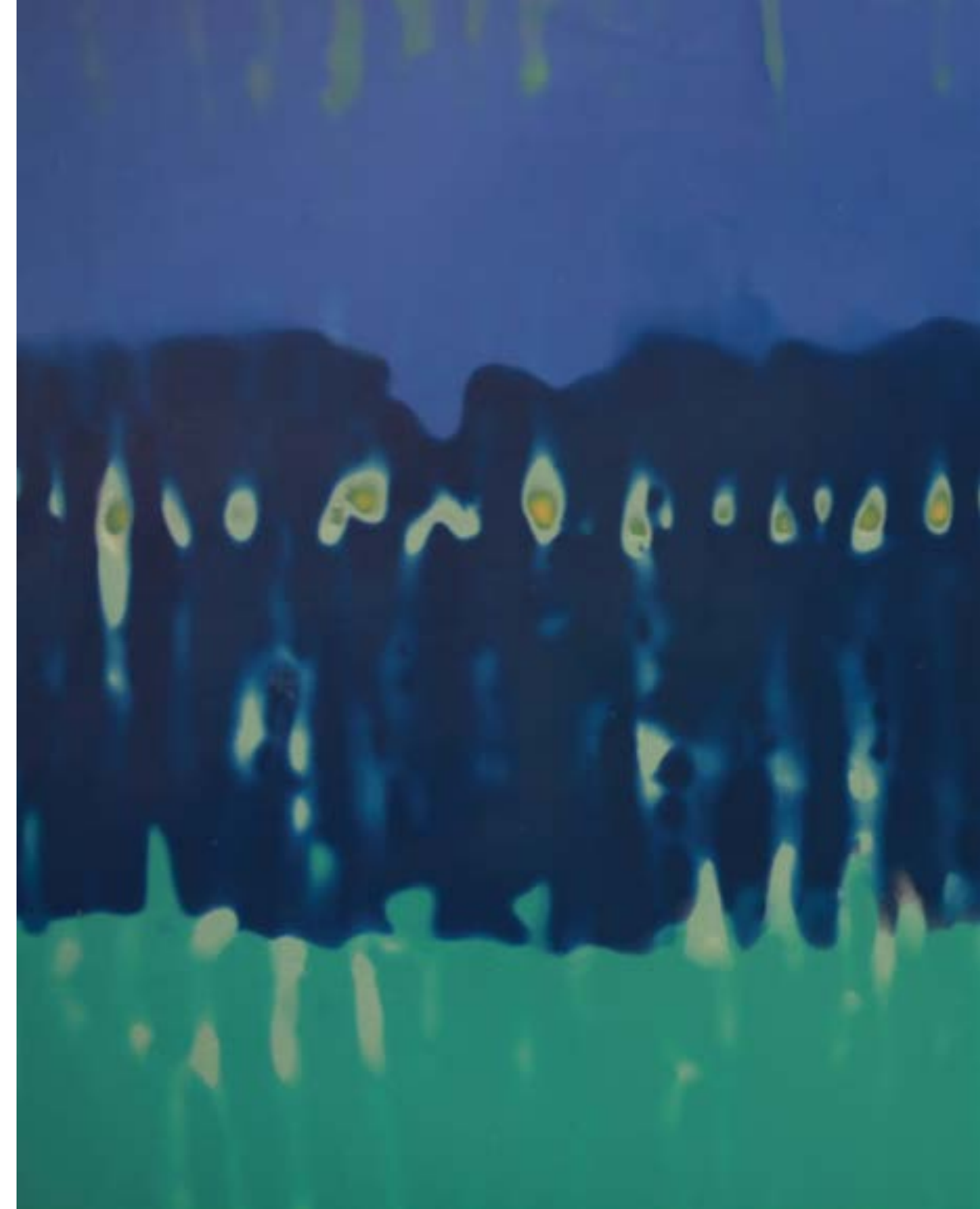


Palisades | 40"x60"
Encaustic on panel
Detail - right





Great Divide | 40"x60"
Encaustic on panel
Detail - right





Atlantis | 50"x40"
Encaustic on panel



Sail Away | 50"x40"
Encaustic on panel



Perpetua | 40"x30"
Encaustic on panel
Detail - right





Shawna Moore

5875 Highway 93 South, Studio F
Whitefish, MT 59937

406.261.6528

www.ShawnaMoore.com

shawnamooreart@hotmail.com



www.shawnamoore.com