



**SHAWNA MOORE**  
STRATA | 2020

SHAWNA MOORE  
STRATA | 2020

2021 Copyright by the author of this book, Shawna Moore.  
The book author retains sole copyright to her contributions in this book.

[www.ShawnaMoore.com](http://www.ShawnaMoore.com)

Designed & edited by Highline Design Co. - [www.highline-design.com](http://www.highline-design.com)

Photography by Morgan Delaney



## ARTIST STATEMENT

**Shawna Moore is a contemporary American painter known for her subtle explorations of color. Her paintings are the product of an ongoing investigation into the nature of abstraction and the medium of painting itself.**

**“She pours layer after layer of hot, colored wax onto her panels, letting some color come through, keeping some hidden below, exploring the alchemy of color and line, addition and subtraction, melting and cooling. Think of a glacier slowly pressing and forming the earth below as it expands and contracts; such is the gradual, tectonic beauty of Ms. Moore’s carefully distilled encaustic paintings,”** notes Thomas Cushman, of Gallery MAR Carmel.

**In her artist statement Moore explains, “In this work, I revisit favorite color combinations, inspiration from the palettes of artists like Englishman J.M.W. Turner and Australia’s Aboriginal master Yannima Tommy Watson and my favorite theme, water. Using the concept of “strata” for the show helped to direct the painting process. Knowing that working with wax based paint usually involves a build-up of layers, I challenged myself to reveal that steady succession and to stack horizontal elements more forcefully in this work.**

**I make the kinds of artwork that I like to look at. When visiting galleries and museums, I am intrigued by art that I can’t quite figure out how it was made or how the artist came to such a simple and pure expression. That’s what I aim for, technical prowess and a momentary capture of the sublime aspects of nature and my life as a thinking, feeling, creative person.**

**The challenge is to grow and evolve as an artist. My focus is painting, not just encaustic painting. Acknowledging the significance of growth and reinvention, I am looking at questions around sustaining a successful and evolving artistic practice.”**



Canyon Wall  
40"x 30"  
Encaustic on panel



Tangerine | 44"x60"  
Encaustic on panel





True North | 40"x 50"  
Encaustic on panel  
Detail - left





Black Bird  
48"x24"  
Encaustic on panel

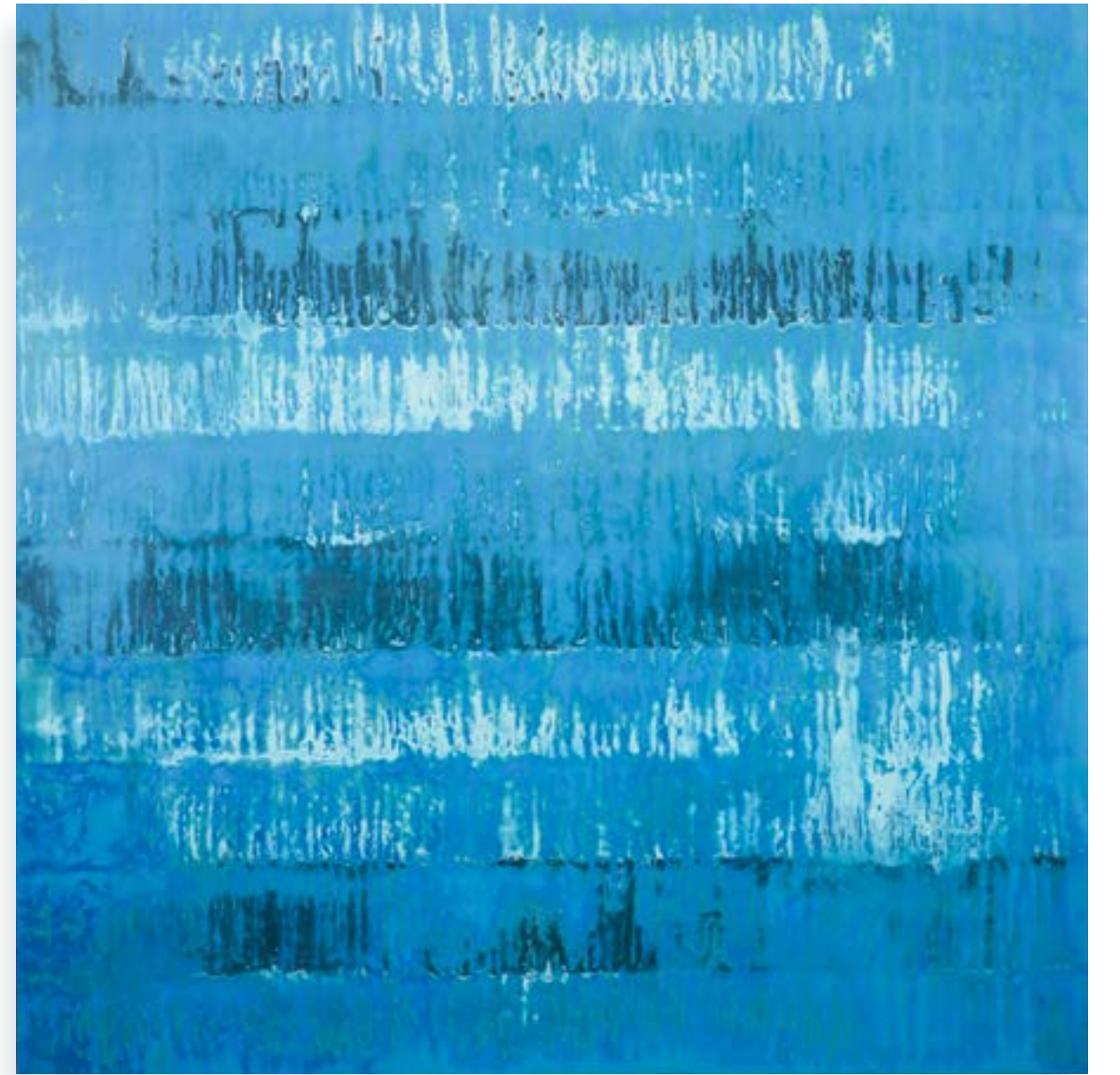


Thin Ice  
60"x28"  
Encaustic on panel



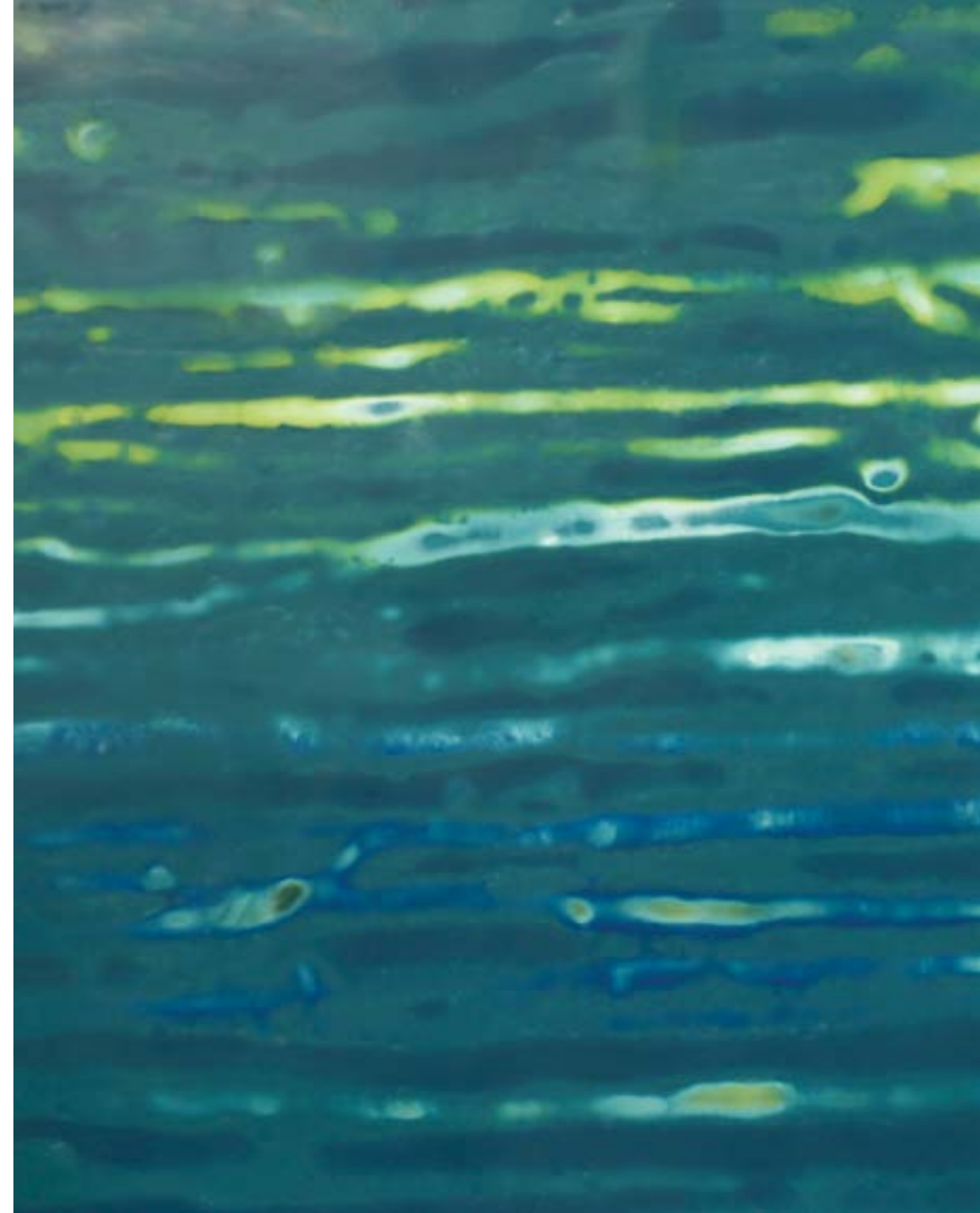


Full Sail | 60"x60"  
Encaustic on panel  
Detail - left





Flow State | 45"x45"  
Encaustic on panel  
Detail - right



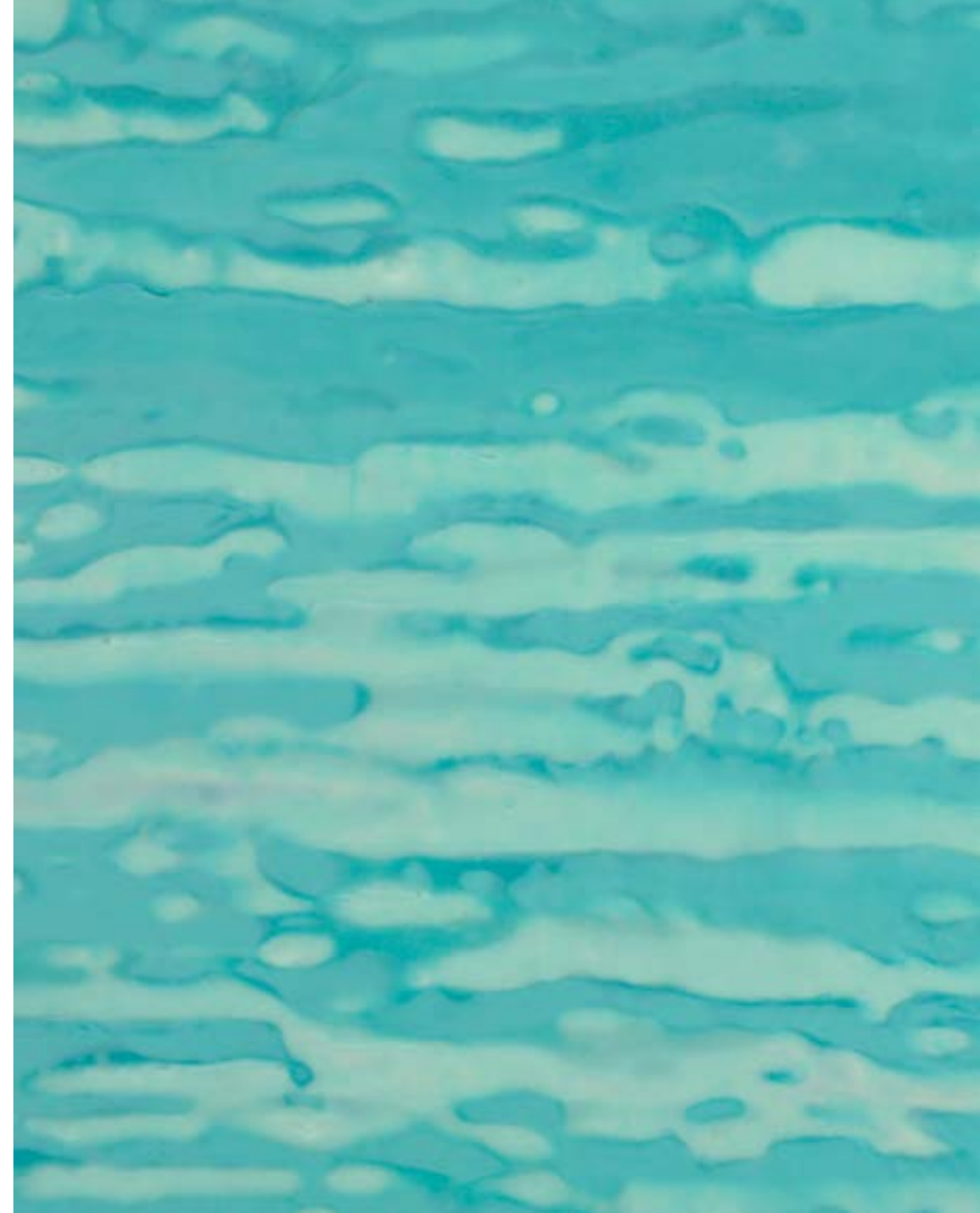


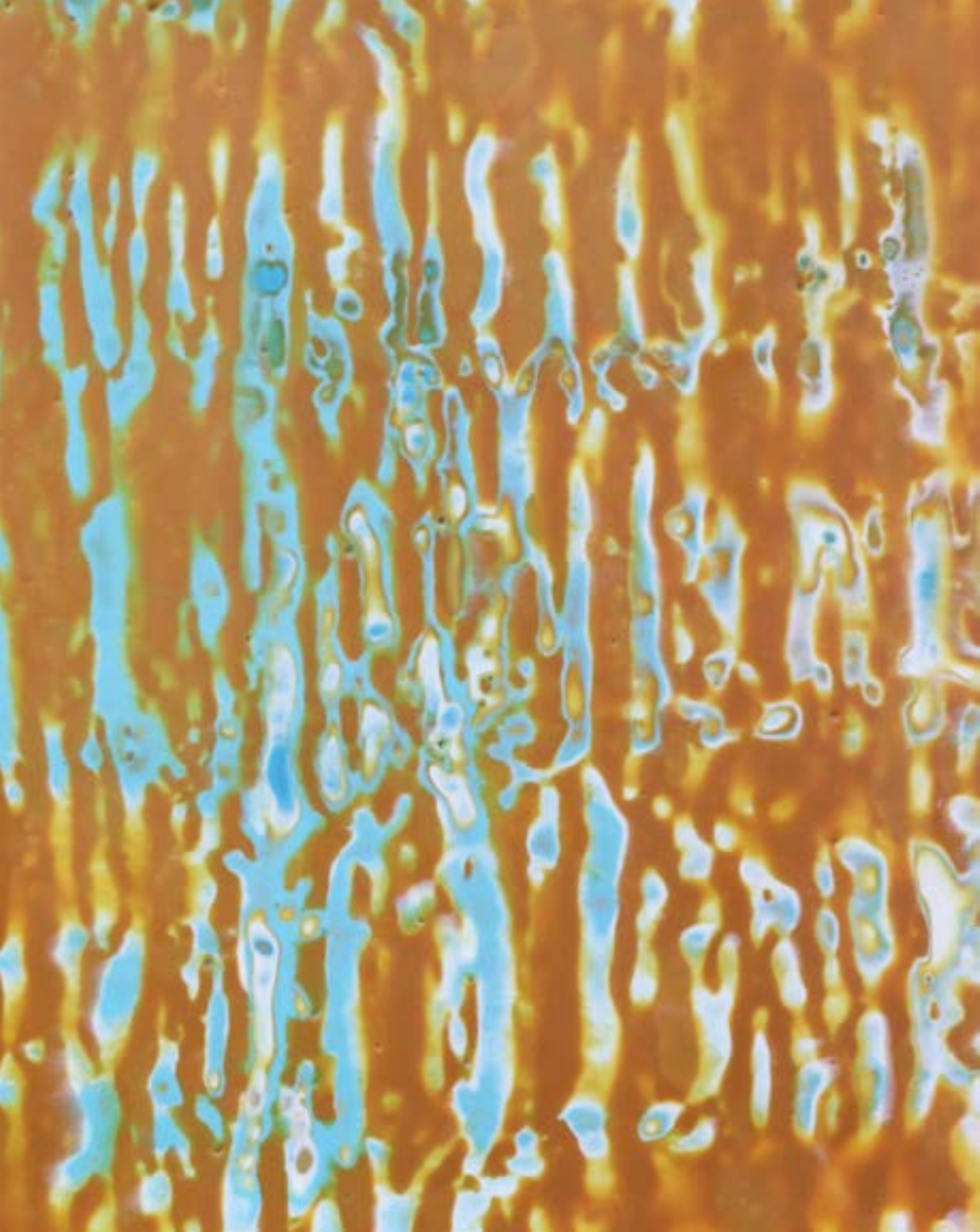
Intersection 1 | 40"x20"  
Intersection 2 | 40"x20"  
Encaustic on panel  
Detail - left





Water Baby | 45"x45"  
Encaustic on panel  
Detail - right



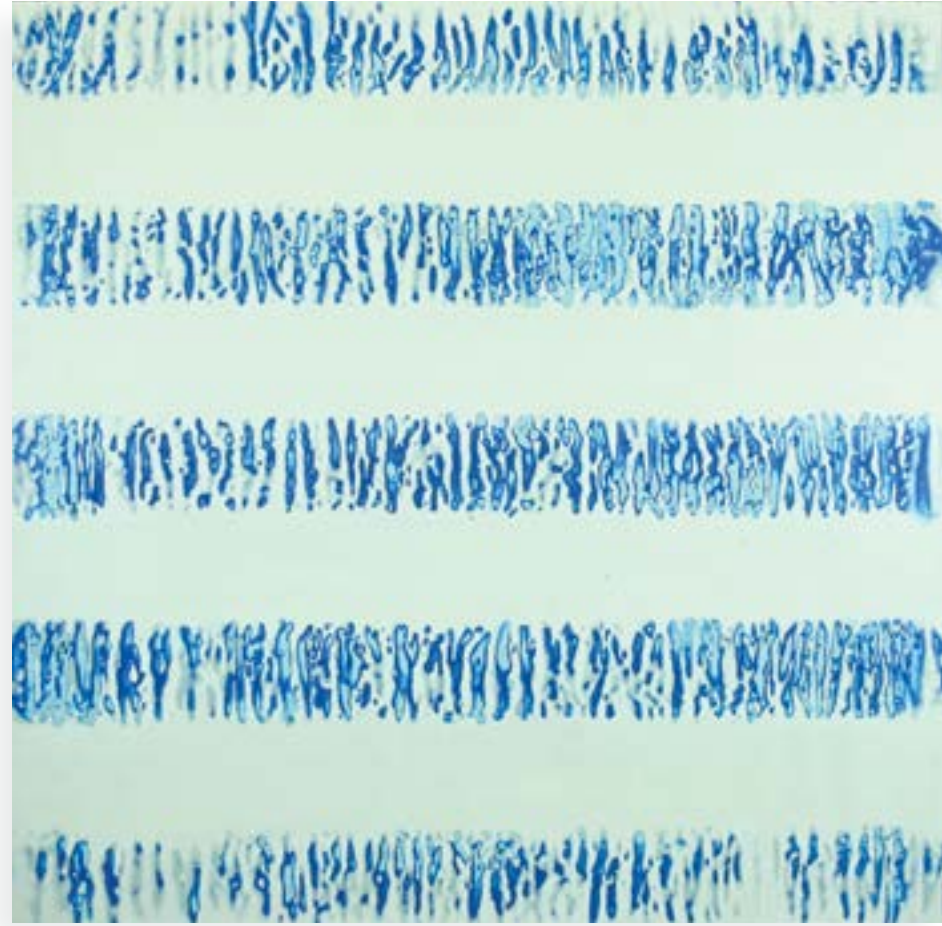


Super Nova | 40"x40"  
Encaustic on panel  
Detail - left

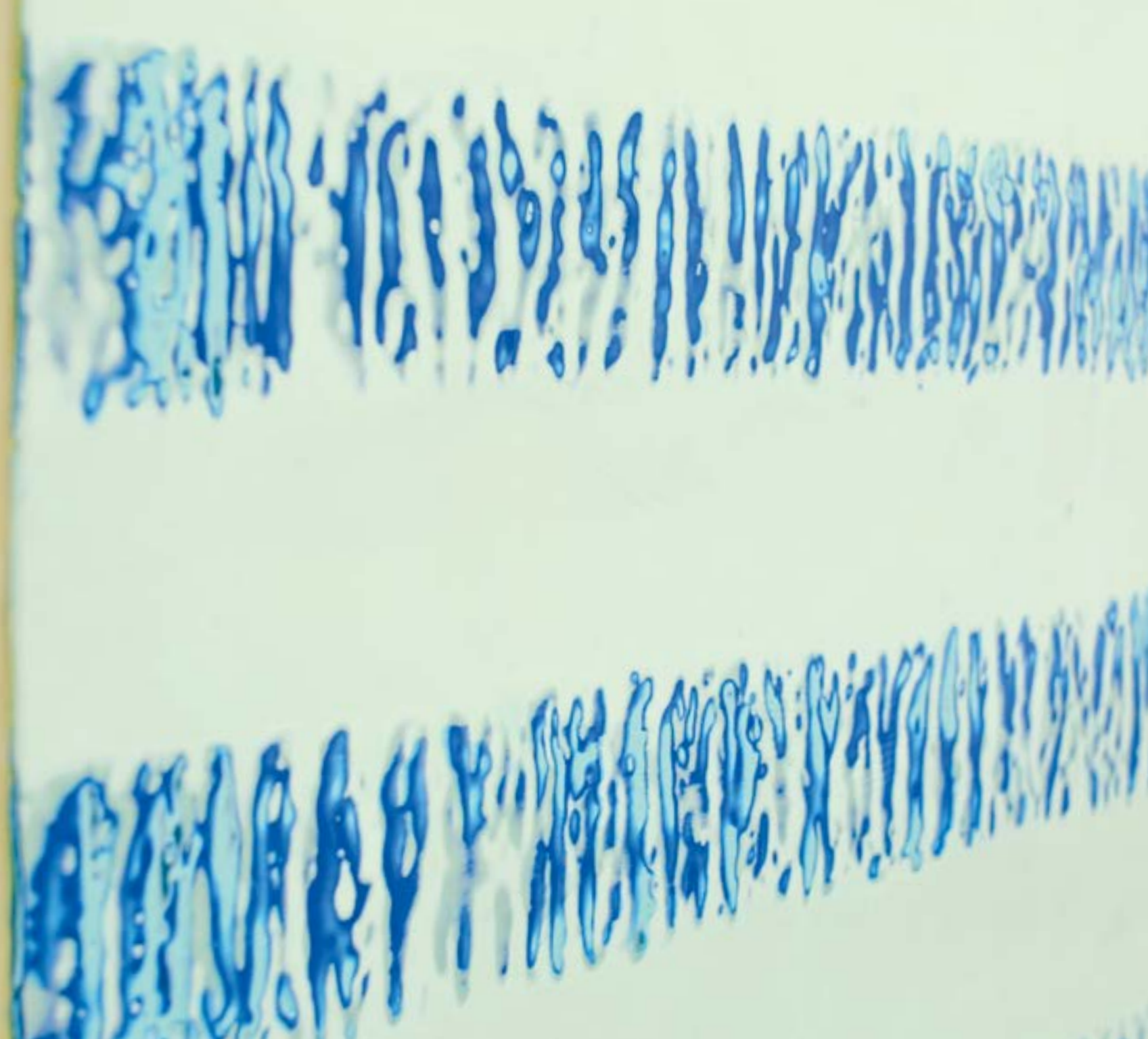


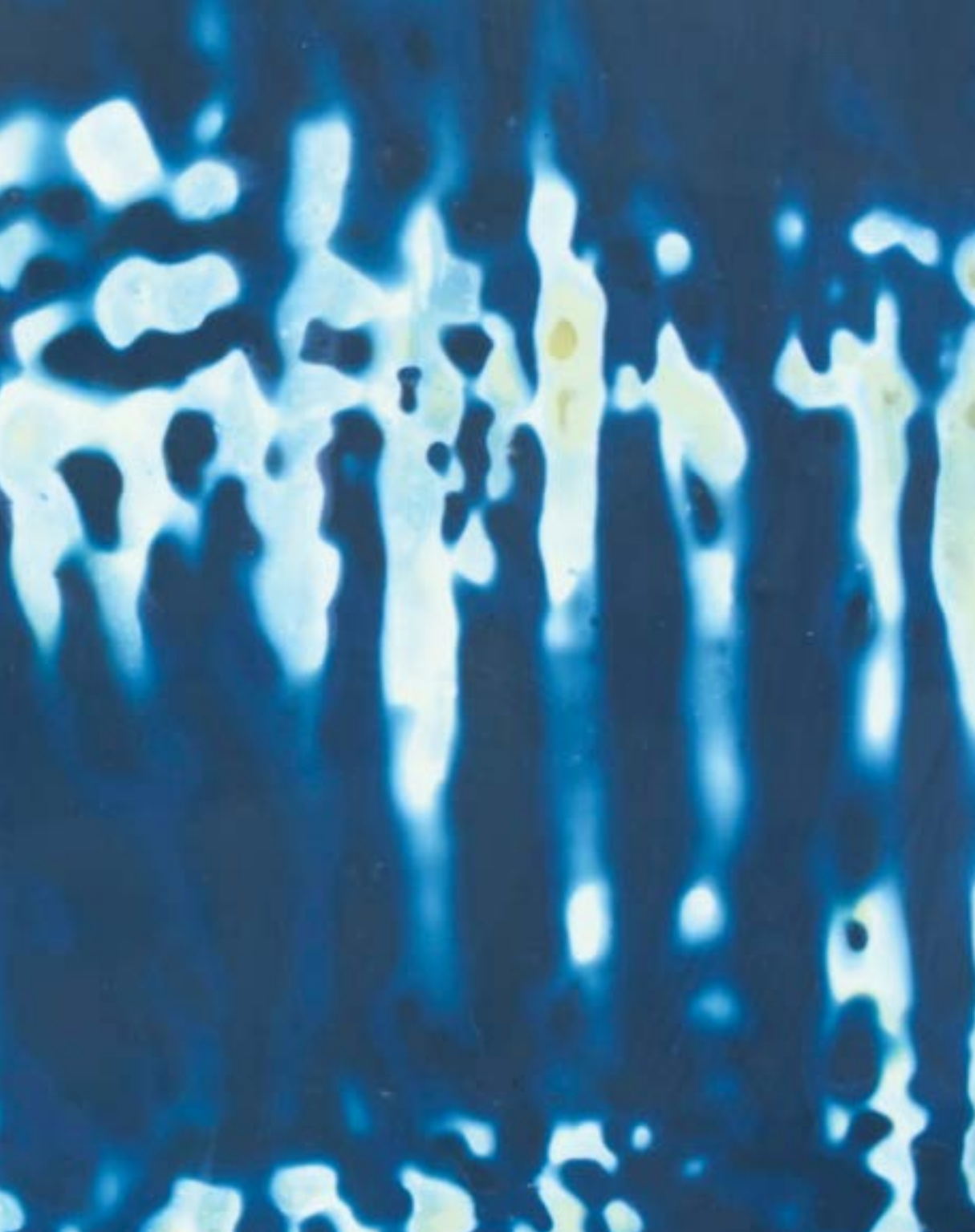


Fall Whisper Diptych | 60"x40"  
Encaustic on panel



Nautilus | 45"x45"  
Encaustic on panel  
Detail - right





Safe Harbor | 50"x40"  
Encaustic on panel  
Detail - left







Red Door | 60"x40"  
Encaustic on panel





Sea of Shadows | 40"x 50"  
Encaustic on panel  
Detail - left



Shimmer | 8"x8"  
Encaustic on panel  
Detail - left



Small informational labels or artist statements placed next to the two smaller paintings on the left wall.





Dark Matter | 60"x60"  
Encaustic on panel



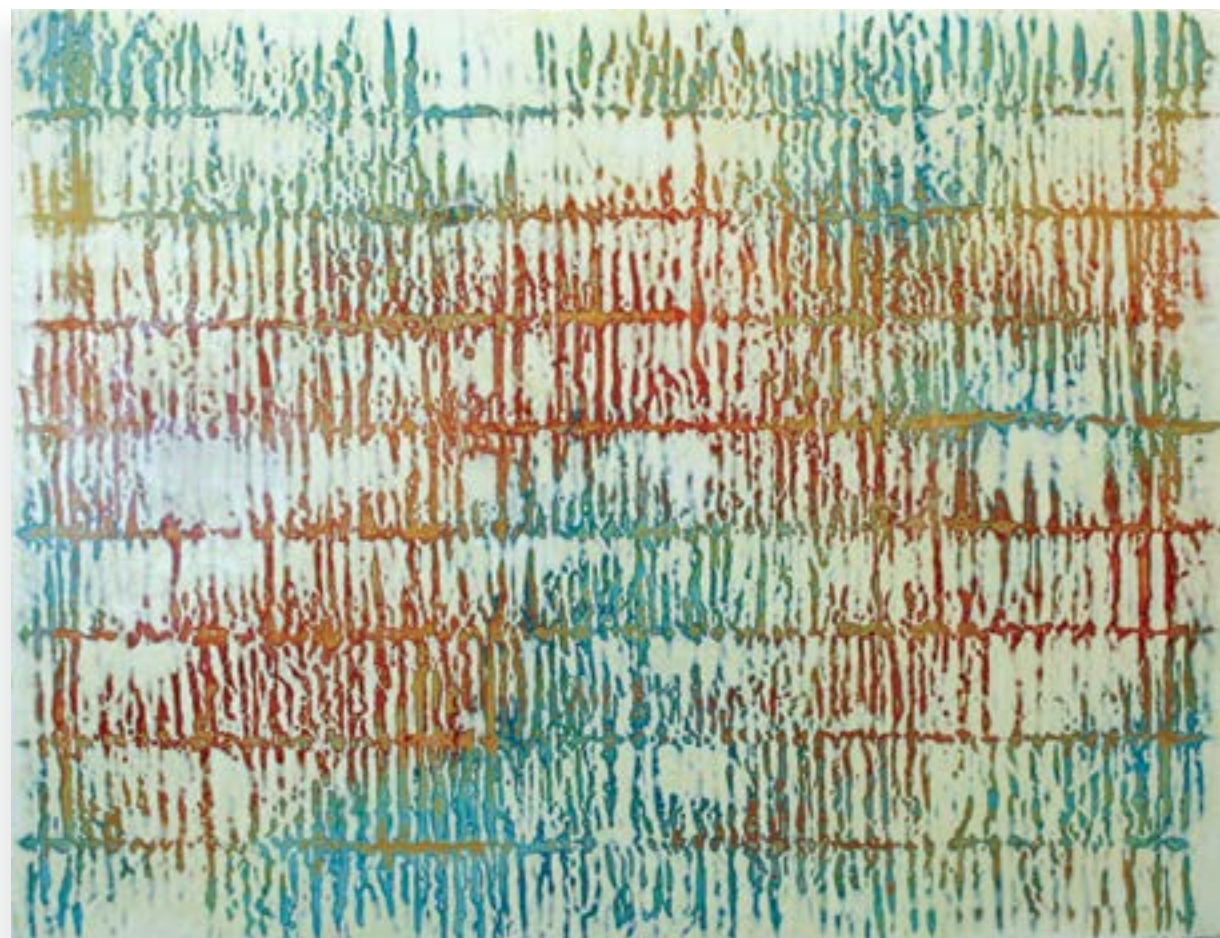
Trade Winds | 40"x40"  
Encaustic on panel



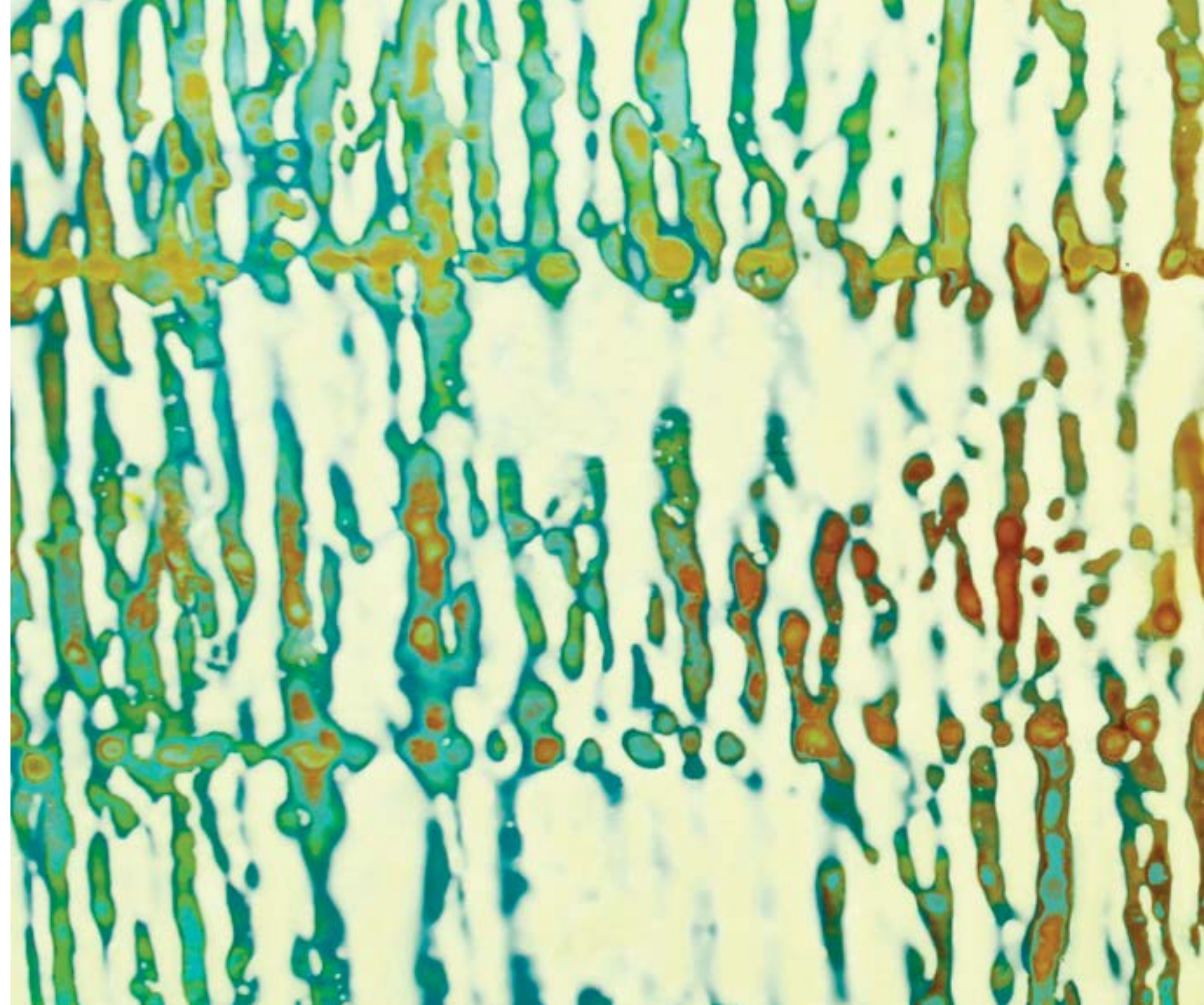
Border Waters | 40"x40"  
Encaustic on panel







Turner | 45"x56"  
Encaustic on panel  
Detail - right



Shawna Moore

5875 Highway 93 South, Studio F  
Whitefish, MT 59937

406.261.6528

[www.ShawnaMoore.com](http://www.ShawnaMoore.com)

[shawnamooreart@hotmail.com](mailto:shawnamooreart@hotmail.com)