



**SHAWNA
MOORE**

TIME & SPACE
2022

SHAWNA MOORE

TIME & SPACE | 2022

ON THE COVER:

DROP OUT

60"x 60"

Encaustic on panel

2022 Copyright by the author of this book, Shawna Moore.

The book author retains sole copyright to her contributions in this book.

WWW.SHAWNAMOORE.COM

DESIGNED & EDITED BY HIGHLINE DESIGN CO. | WWW.HIGHLINEDESIGN.CO

PHOTOGRAPHY BY MORGAN DELANEY



ARTIST STATEMENT

Shawna Moore is a contemporary American painter living and working in Montana. Known for her subtle and unexpected explorations of color, the art she creates delights and surprises. She uses travel and sport to fuel her curiosity of art and life. Her paintings are the product of an ongoing investigation into the nature of abstraction and the materials and action of painting itself.

Shawna creates paintings filled with a joie de vivre that may stir a variety of emotions. Her aim is to create intimate encounters with color, light and space. Using heat to formulate a mixture of natural beeswax, damar tree resin, and the high-grade artist pigments, Moore makes each encaustic paint color by scratch. This alchemical process allows the personality, work habits and surroundings of the artist to naturally inhabit each creation. The way that the paintings are built up from the base to the surface in up to 50 thin layers, creates a unique, unrepeatably combination of color and surface. Each work is a collection of the circumstances occurring at the time during which it was made, cast in durable wax and preserved for appreciation and enjoyment.

“People can see the light on a totally different kind of surface, it’s a transporting kind of thing. They’re something you could spend time with and appreciate the way she reveals layers. It feels like they continue

through the piece to places you cannot see,” says Monica Pastor of Underscore Art in Whitefish. Pastor has been exhibiting Moore’s work since the artist landed in Montana.

During her travels to unique destinations, the artist keeps watercolor paints and a sketchbook at the ready. This drawing and painting practice originated over 35 years ago, while studying art and architecture in Greece during college. Now, when away from her spacious Montana studio, she captures the action and mood of days spent surfing in Hawaii or Costa Rica. Back home, she spends long days in the mountains skiing big sky country and hiking near Glacier Park and later deciphers her collected travel images into large scale abstracted landscapes using her distinctive wax painting process that she has developed over the last 20 plus years.

What keeps the artist engaged in a lifetime of creative practice is tuning into the patterns and pace of seasons, activities and locations. Observing the colors, sensations and moods of mountain and sea, weather and wind, light and space, all help recharge the reservoir of inspiration the artist draws from.

“You aren’t rigid with some fixed idea before you go into your studio of what a painting should be...because it seems to take all the joy out of living.” -Lee Krasner



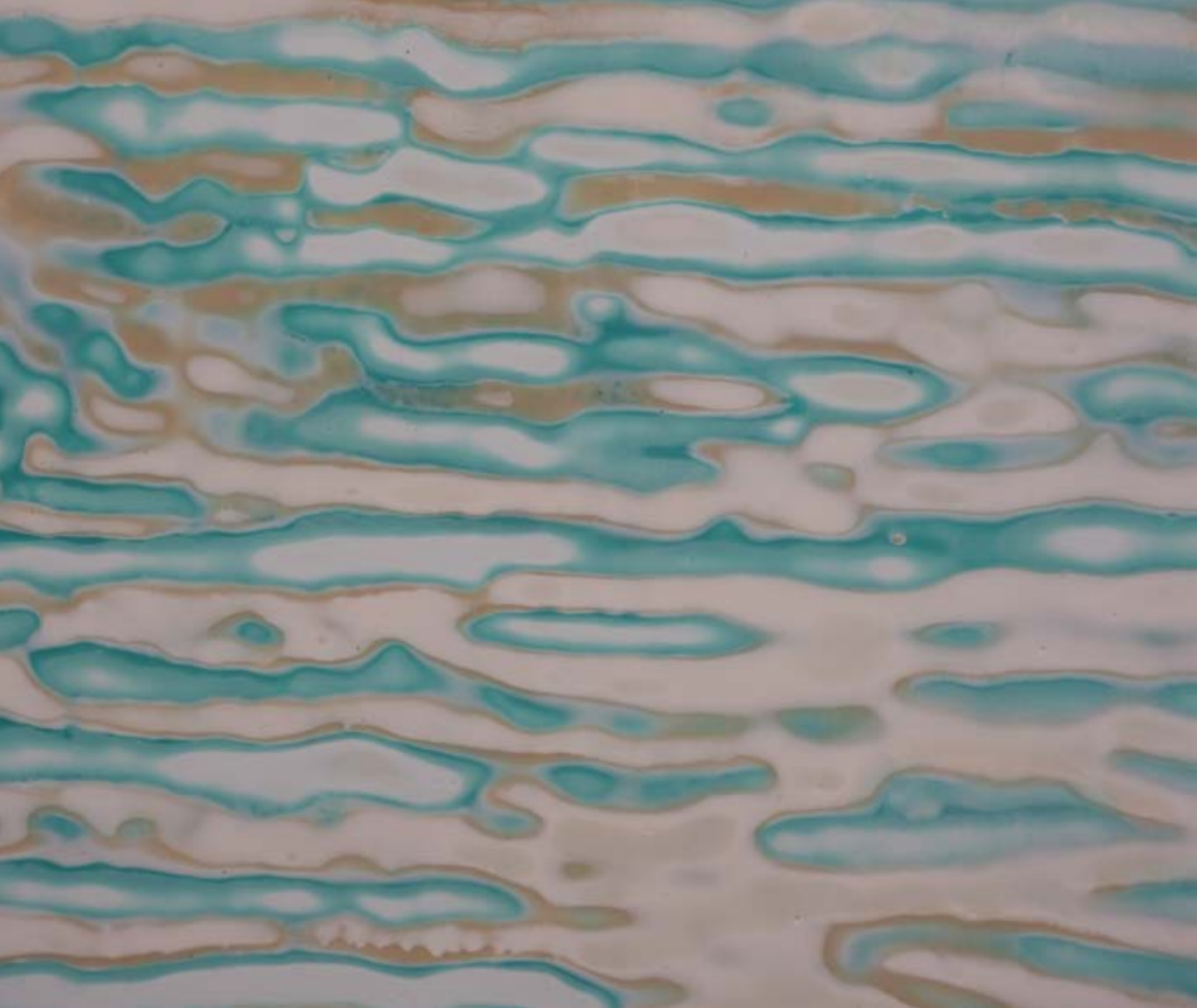
KIMBER

40"x 30"

Encaustic on panel

Detail - Right







MIASMA

40"x30"

Encaustic on panel

Detail - left

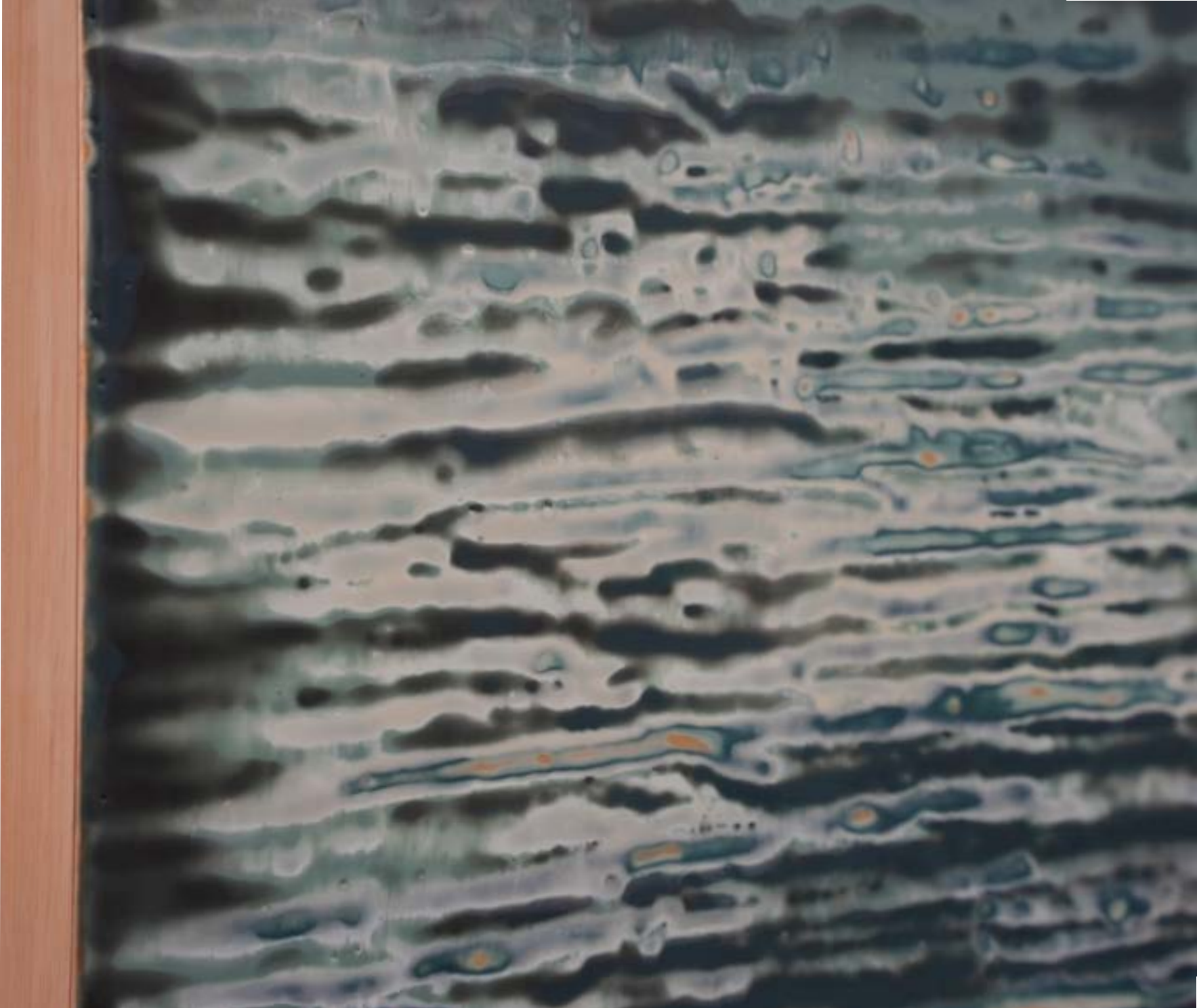


TORMENTA

60" x 40"

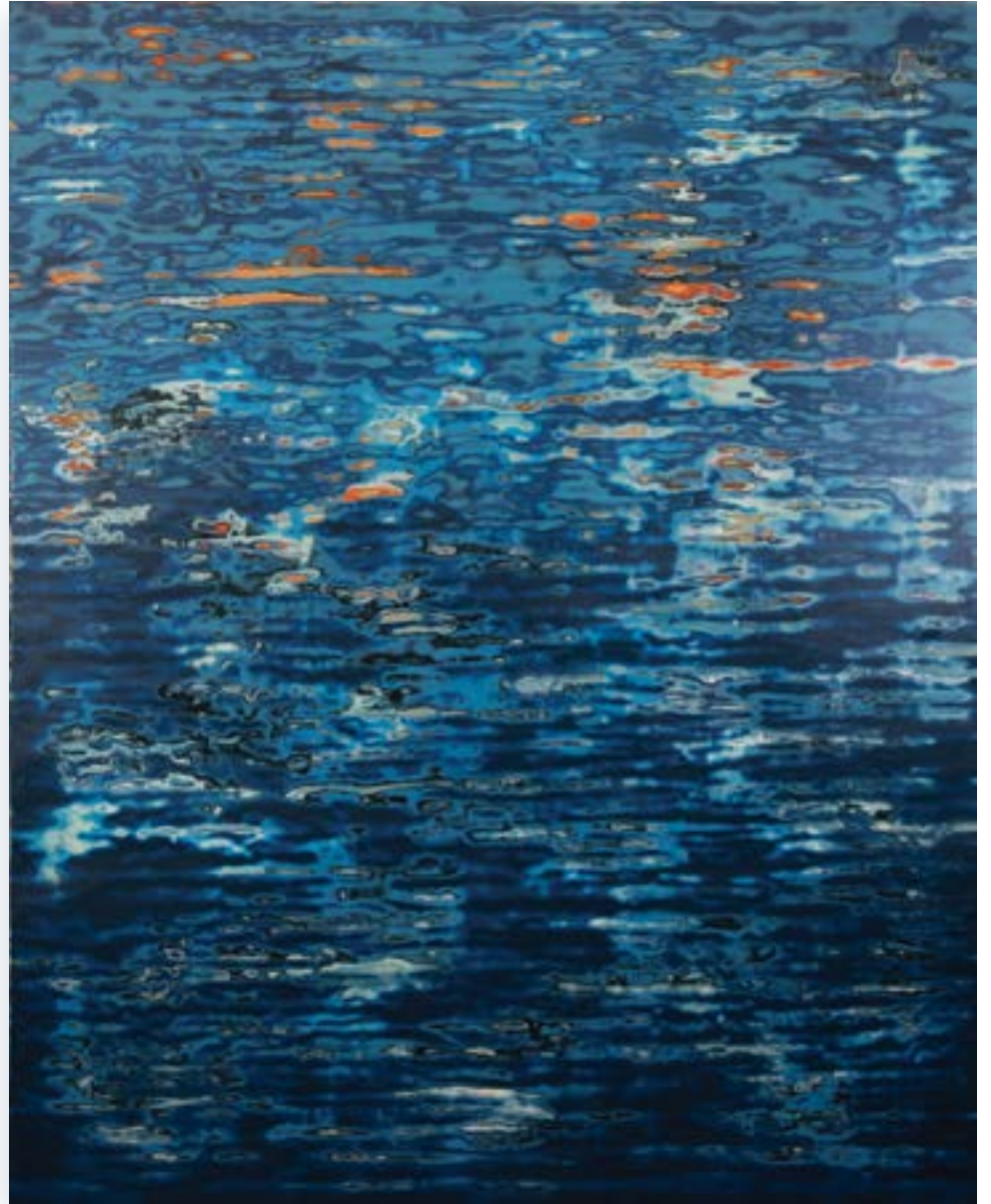
Encaustic on panel

Detail - right





BAY LIGHT STUDY
21"x17"
Watercolor



BAY LIGHT

60"x48"

Encaustic on panel

LEELA

48"x60"

Encaustic on panel





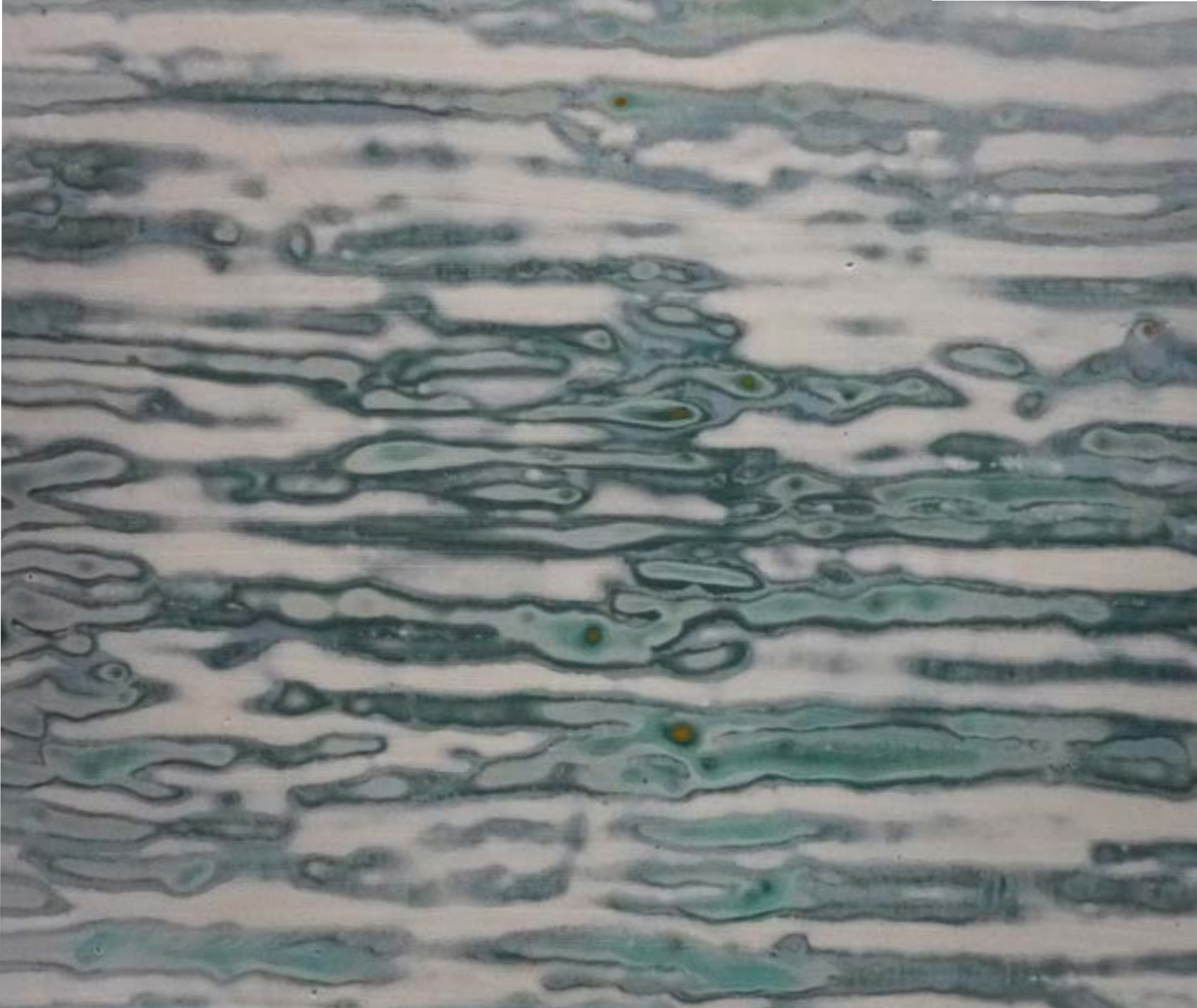


THE TIDE

40"x 30"

Encaustic on panel

Detail - right







DROP OUT

60"x60"

Encaustic on panel

Detail - left & cover image

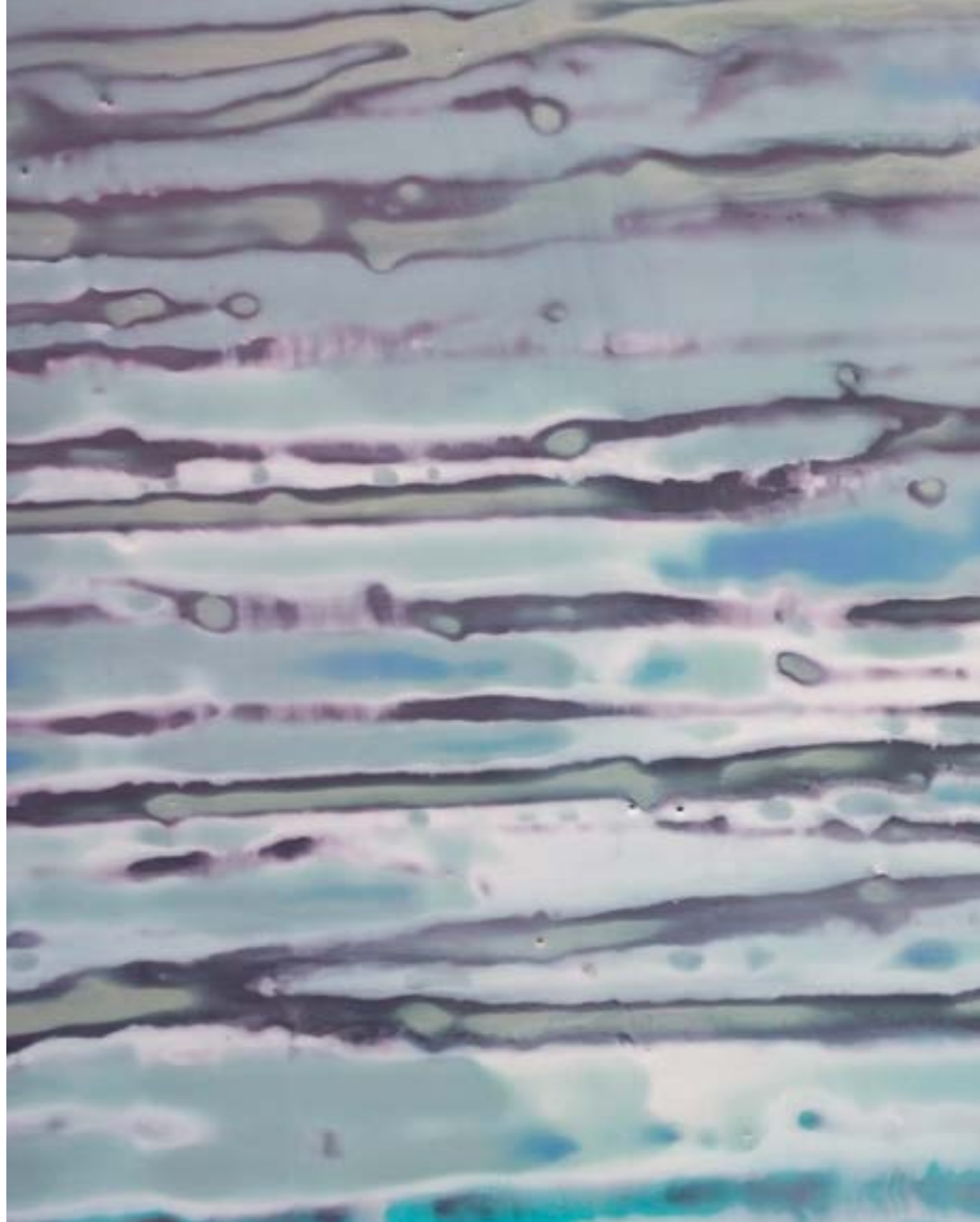


TO THE SHORE

36"x36"

Encaustic on panel

Detail - right







PARADISO

60"x48"

Encaustic on panel

Detail - left

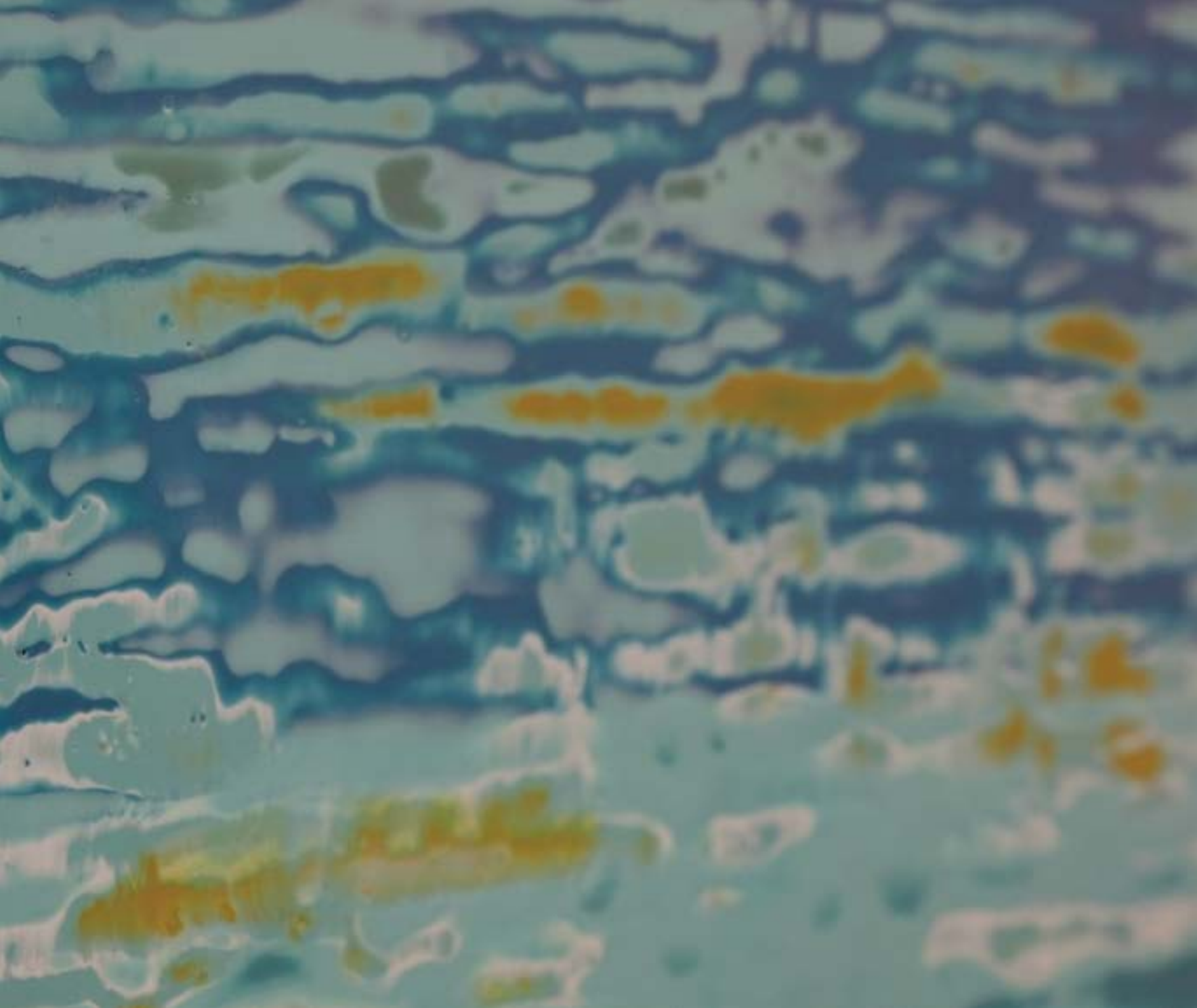


BLUE SWELL

60"x48"

Encaustic on panel

Detail - right





BLUE STUDY
Paper Study



RED STUDY
Paper Study



WHITE STUDY

Paper Study



TEAL STUDY

Paper Study

Photo Credit: Emily Treasure

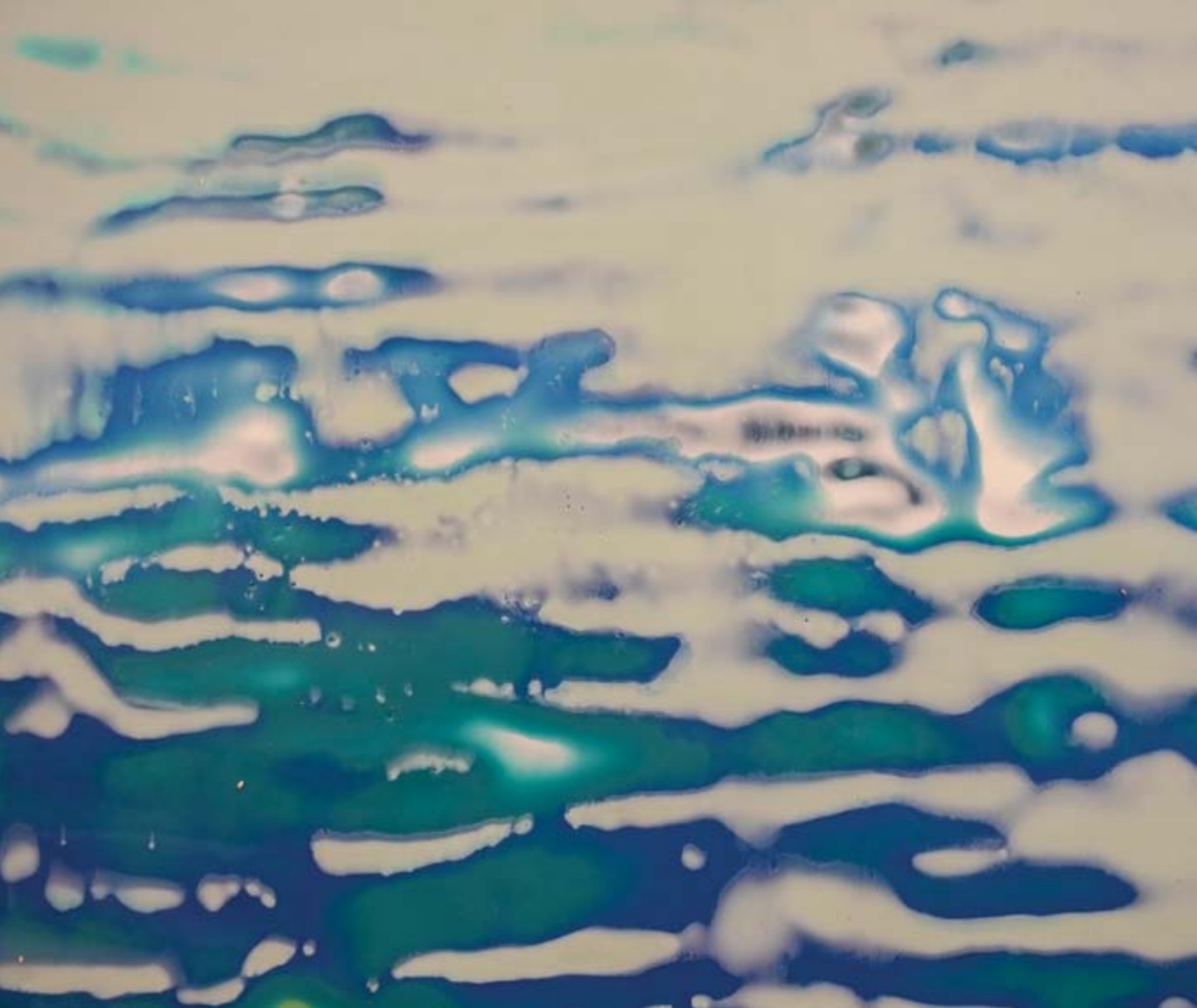


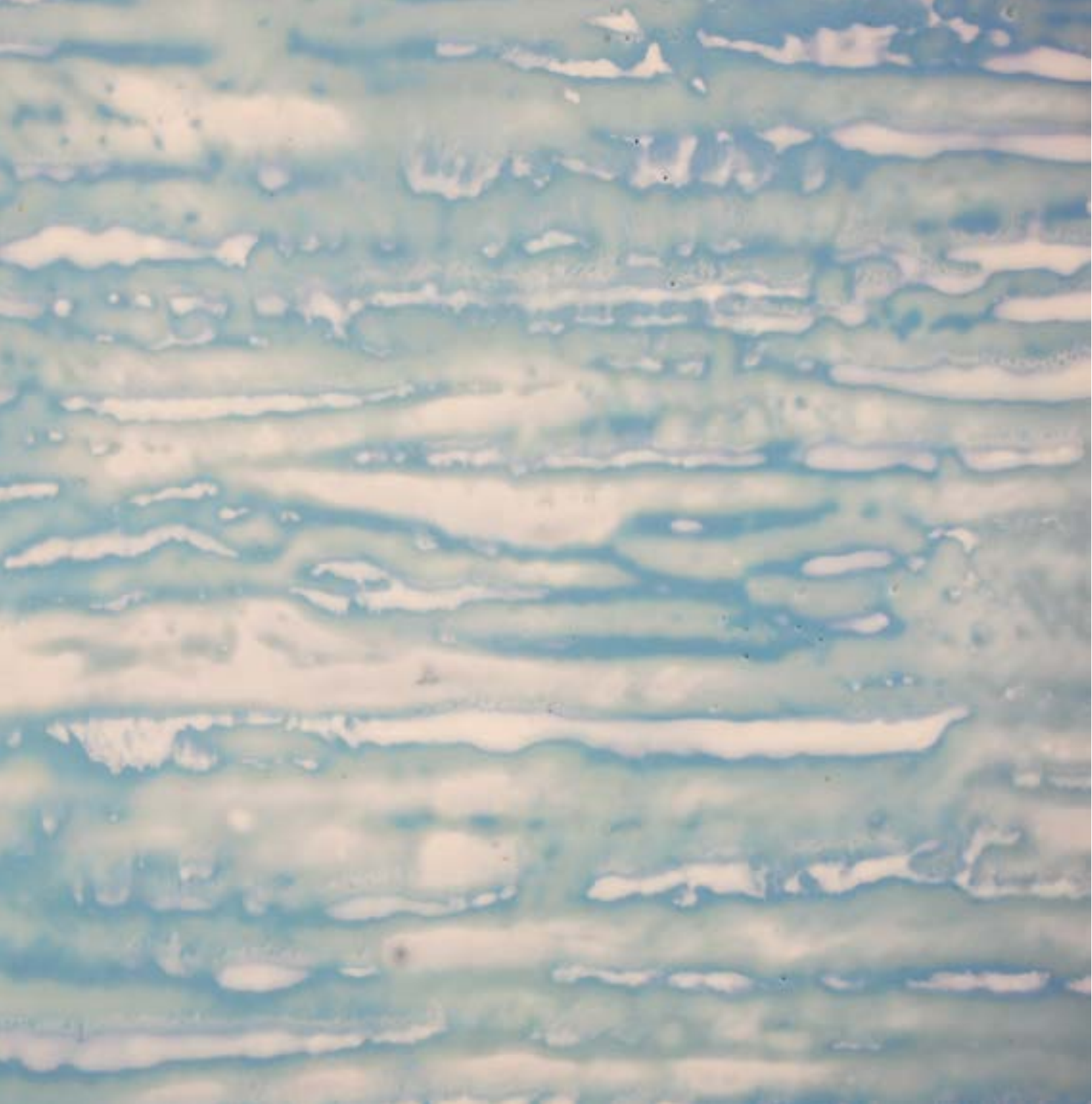
DOLPHINA

60"x40"

Encaustic on panel

Detail - right







WATERFIELD

32"x32"

Encaustic on panel

Detail - left



MONET

60"x48"

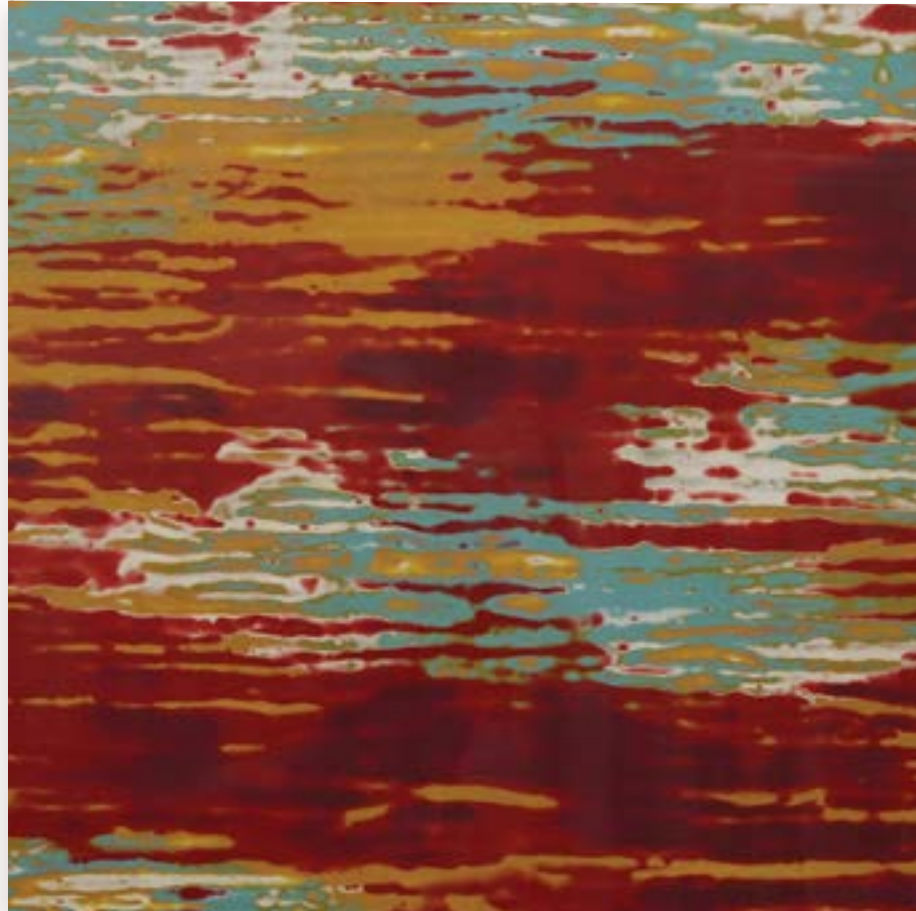
Encaustic on panel



LINE UP

30"x 60"

Encaustic on panel



SIREN SONG

48"x 48"

Encaustic on panel



WE FLOAT

50"x40"

Encaustic on panel



PERSIMMION

60"x40"

Encaustic on panel





DIVE IN

36" x 36"

Encaustic on panel

Detail - Left



ALTITUDE

36"x36"

Encaustic on panel

Detail - right







GOLDEN HOUR

60"x 60"

Encaustic on panel

Detail - Left



HALCYON DAYS

44"x36"

Encaustic on panel

Detail - right





Shawna Moore

5875 Highway 93 South, Studio F
Whitefish, MT 59937

406.261.6528

shawnamooreart@hotmail.com

WWW.SHAWNAMOORE.COM



WWW.SHAWNAMOORE.COM